



# **The Promise and Pitfalls of Updating State and Federal Compliance Reporting with New Administrative Systems**

**“Moving Beyond the Numbers:  
The Role of IR in Decision-Making”**

**MidAIR Fall 2008 Conference  
Kansas City, Missouri  
November, 2008**

**Randy Sade, Ast Research Analyst, Institutional Research & Planning, UM System  
Robert Mullen, Associate Director of Institutional Research & Planning, UM-System**



# Session Overview

- Status of New Administration Systems
- Overview of Our Compliance Processes
- Focus on Student Data
- New Roles for System IR
- Challenges/Frustrations and Opportunities
- Questions and Answers



# University of Missouri

- Large residential campus
- Engineering residential campus
- Two urban campuses
- Characteristics:
  - Over 64,000 Students
  - Over 27,000 Faculty and Staff



# Status of New Administrative Systems

## PeopleSoft (Oracle)

All Campuses and System are now in production with:

- Student Records
- Student Financial Aid
- Student Finance
- Human Resources
- Finance



# Compliance Data

- New Administrative Systems, New Compliance/Census Process
- A Validation of System Conversion/Implementation
- A Validation of New Administrative Processes



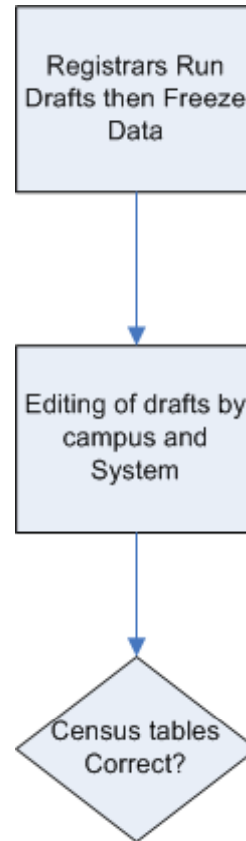
# Compliance/Census Data

(continued)

- Frozen Tables for Enrollment, SCH/Sections, End of Term, Completions, Teaching Loads
- Uses
  - Trend
  - Comparative
- MDHE (EMSAS)
- NCES (IPEDS)
- Campus Consistencies



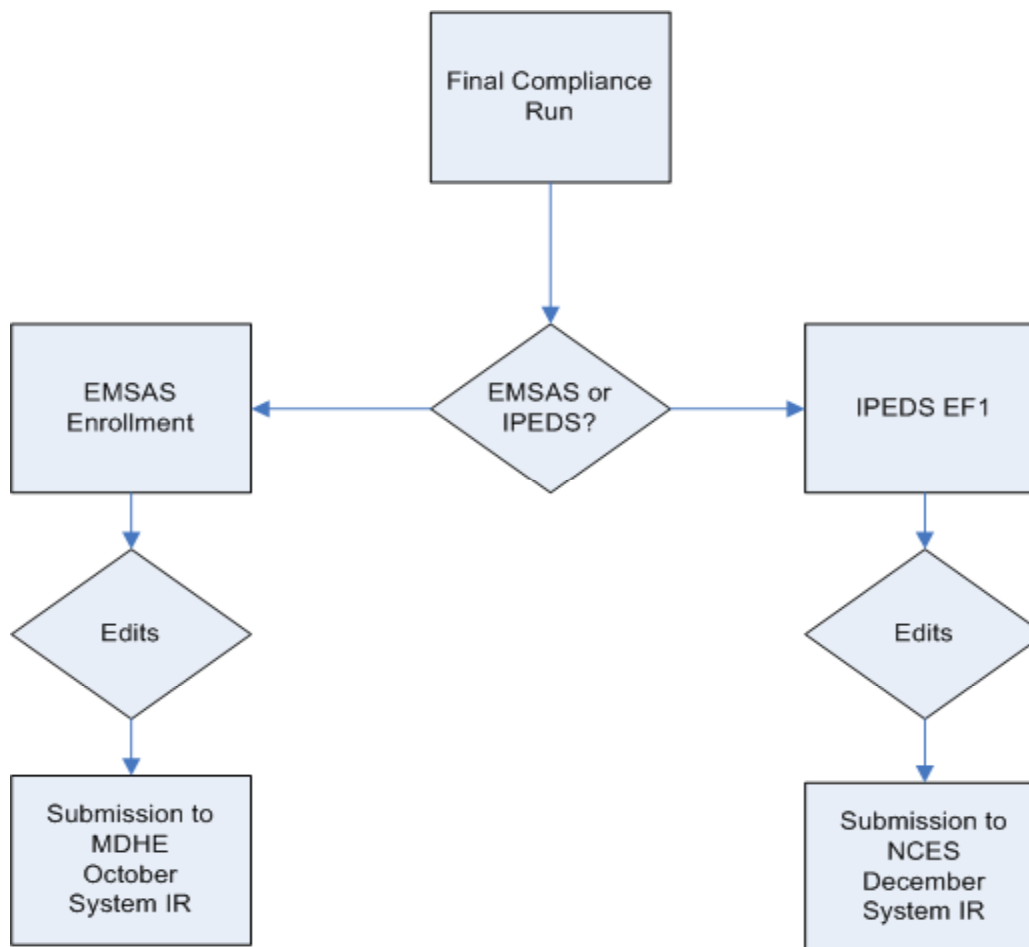
# Student Census/Compliance Process





# Student Census/Compliance Process

(continued)







# Institutional Research's Roles

- Coordinators
- Facilitators
- Moderators
- Interpreters
- Hosts
- Data Editors



# Challenges/Frustrations

- Reporting v. Research
- New Data
- Data Editing early in Process
- Re-written Programs and Reports
- Communications
- Reporting v. Production for Reporting
- October for State, December for IPEDS:  
What to do with Changes and/or NCES  
Data Checks?



# Challenges/Frustrations

(continued)

- New Processes/Roles v. Business as Usual
- Data/Report Timeliness
- Errors: Is it:
  - Data Entry
  - Program Errors
  - Definition Errors
  - Process Errors
- Four Campuses, Five Perspectives



# Opportunities

- Improve Processes, Data, and Reporting Efforts
- Review of Old Interpretations, Definitions, & Rules
- Finding things that had been missed with legacy reports



## Questions & Discussions: What Are Others Doing?

- What is your office's role in Compliance Reporting?
- How does your Office or institution use Compliance Data?
- Does your institution review its compliance processes or definitions?
- Does your institution have the process documented?



# Conclusions

- Status of New Administration Systems
- Overview of Our Compliance Processes
- New Roles for System IR
- Challenges/Frustrations and Opportunities



Thank You for Your Time



# Contact Information

- **Randy Sade**
  - Assistant Research Analyst, Institutional Research & Planning, UM System
  - (573) 884-9201
  - [sader@umsystem.edu](mailto:sader@umsystem.edu)
- **Robert Mullen**
  - Associate Director of Institutional Research & Planning, UM System
  - (573) 882-0004
  - [mullenrw@umsystem.edu](mailto:mullenrw@umsystem.edu)